

# SANKOFA



21 FLOORS

1ST FLOOR- LOBBY

2ND-21ST FLOORS - -  
RESIDENTIAL UNITS

A Twi word that encourages learning from the past to inform the future, reaching back to move forward, and lifting as we climb.



Lobby



Lobby



Lobby Laundry Room



Lobby



Study Rooms



Student Life Suite

## AMENITIES/FEATURES



4-8 PEOPLE **APARTMENTS**  
AND 9-13 PEOPLE  
**RESIDENTIAL HALL SUITES**



**COMMUNITY KITCHENS** ON  
EVEN FLOORS  
INCLUDES: FRIDGE, STORAGE,  
STOVE, OVEN, SEATING.



LARGE **LAUNDRY ROOM** ON  
FIRST FLOOR. SMALLER  
LAUNDRY ROOMS ON EVEN  
FLOORS BEGINNING ON 10<sup>TH</sup>  
FLOOR AND UP.



**STUDY ROOMS** ON EVERY  
FLOOR (ODD AND EVEN  
FLOORS)



**TRASH CHUTES** ON  
EVERY FLOOR



**RESIDENTIAL LIFE  
OFFICE/STUDENT LIFE  
SUITE - FIRST FLOOR**



**AMAZON LOCKERS -  
FIRST FLOOR**

# SANKOFA RESIDENTIAL AREA



## Living in Sankofa

Sankofa holds roughly 700 residents. There are both four- and eight-person apartments as well as residential halls that hold anywhere between nine to thirteen residents.

Community Kitchens are available on every even numbered floor and include: a fridge, some storage, a stove, an oven, and plenty of seating.



### Apartment Kitchen

Every **Apartment** is equipped with a kitchen. It includes a stove, oven, and fridge.



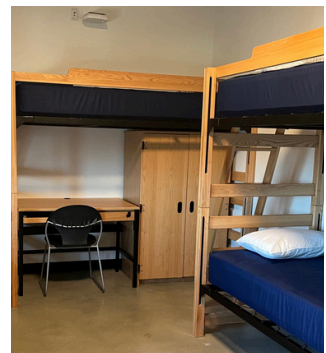
### Single Rooms

A room type found in both Apartment and residential hall Suites. Comes with one bed, table, closet and small drawer.



### Double Rooms

A room type found in both Apartment and residential hall Suites. Each resident has one bed, table, closet and small drawer.



### Triple Rooms

A room type found only in residential hall Suites. Each resident has one bed, table, closet and small drawer.



# EIGHTH COLLEGE

## AMENITIES & FEATURES



**Basketball Court**



**Game Room**

Equipped with a Pool Table, Pac-man machine, 2 TV screens and seating. Accessible using your student ID (Swipe entry)

Located on the second floor of Survivance Hall



**Demonstration Kitchen**

Equipped with a microwave, stovetop, oven, Sink, Shelves, and seating. Accessible using your student ID (swipe entry).

Located on the second floor of Survivance Hall



**Reservable Study Rooms**

Three study rooms are reservable to Eighth College Residents throughout the academic year. They are reservable for three hours at a time. To reserve, please visit the Eighth College website and fill out a reservation form.

located on the second floor of Survivance Hall



**Gym/Basketball courts**

Gym is accessible through the Pulse lobby using your Student ID (Swipe entry). Equipped with pelotons, Weight Machines, Punching Bags, and more.

Located on the first floor of Pulse Hall/ Courts are next to Pulse Gym



**Commuter Lounge**

Open most days between 8 AM to 10 PM. Hours may vary (Holidays/Breaks/Summer etc.) Equipped with seating, fridge, lockers, and restroom.

Located on first floor of Sankofa Hall



**Meditation Pavilion**

Take a moment and visit our meditation pavilion. A beautiful structure that provides a tranquil location for residents to meditate.

Located in front of Commuter Lounge/ next to Sankofa Hall



**Zen Garden**

Visit our beautiful Zen Garden and take a moment to enjoy the scenery.

Located between Azad & Pulse Hall



**Grills**

4 Grills are reservable to Eighth College Residents throughout the academic year. They are reservable for three hours at a time. To reserve, please visit the Eighth College website and fill out a reservation form.

Located in front of Survivance Hall and in-between Azad & Pulse Hall